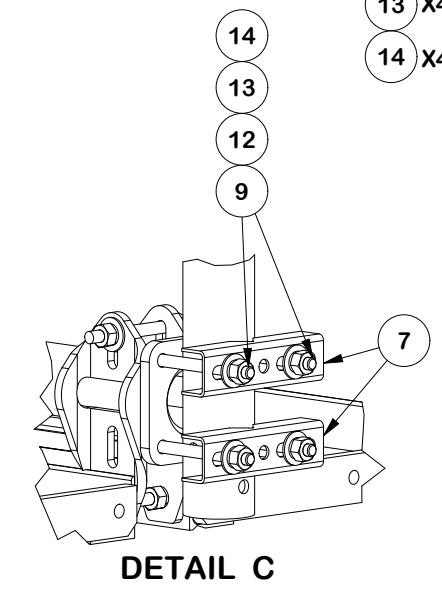
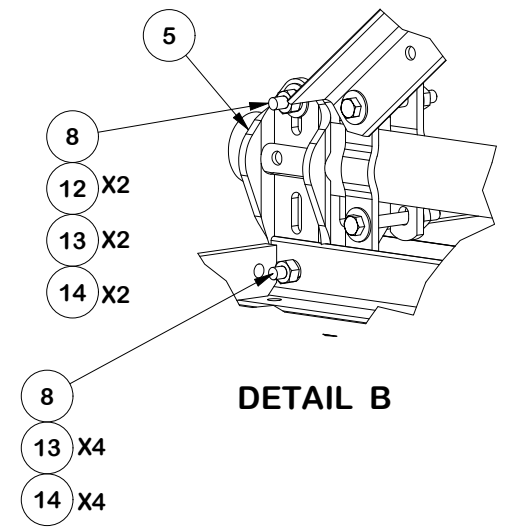
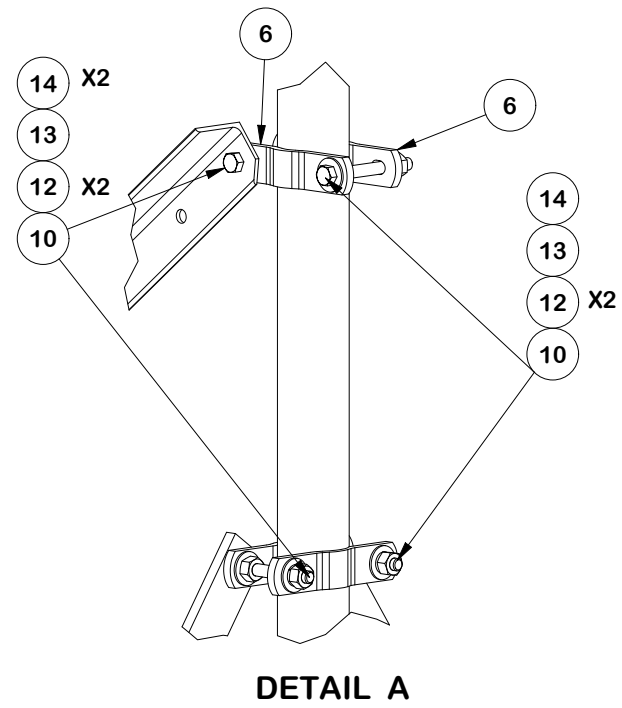
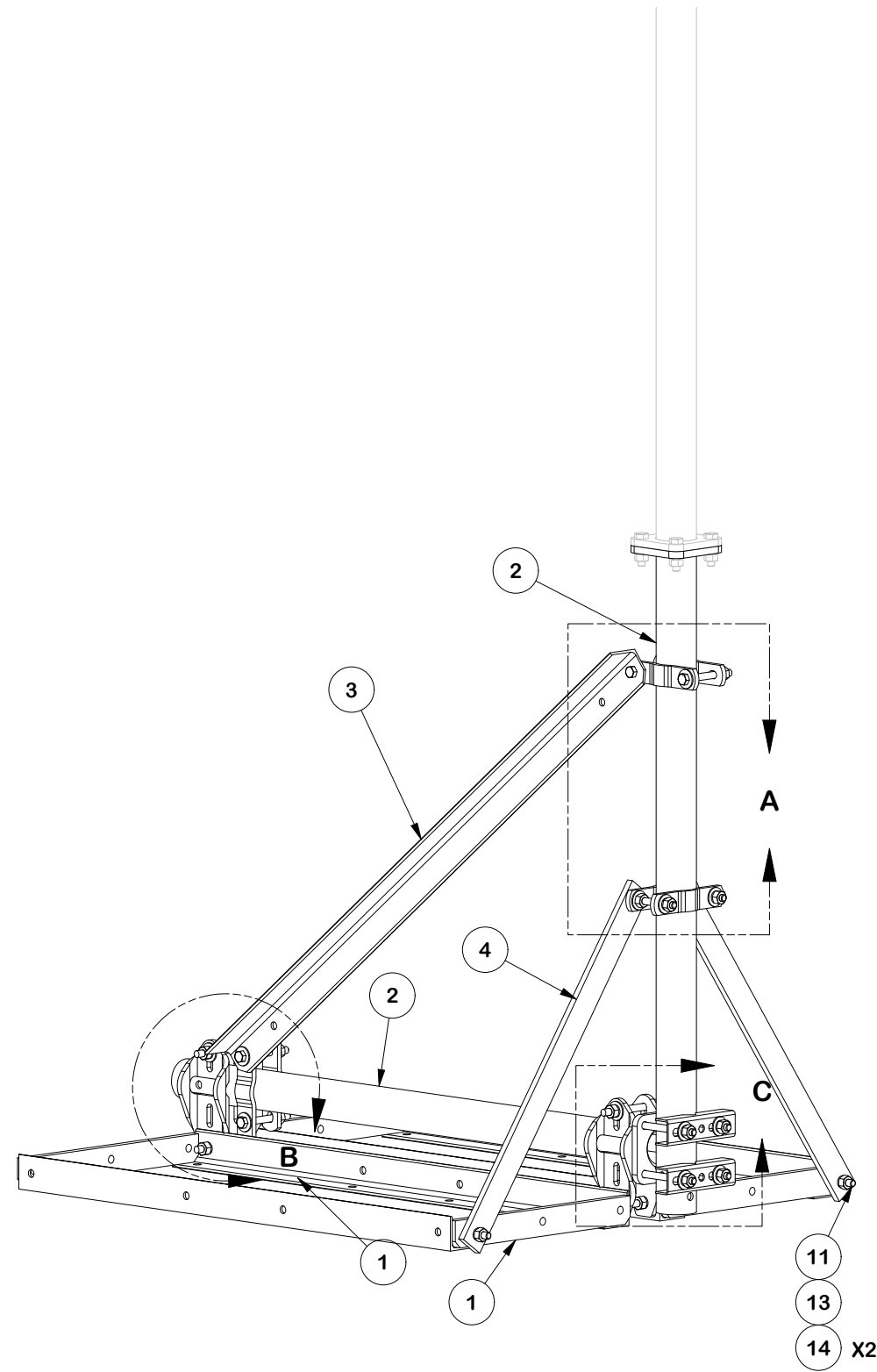


PARTS LIST						
ITEM	QTY	PART NO.	PART DESCRIPTION	LENGTH	UNIT WT.	NET WT.
1	2	X-251012	BALLAST TRAY WELDMENT - SITE PRO 1		36.58	73.16
2	2	X-CSRT-3048FW	CSRT FLANGE PIPE WELDMENT 2-7/8" x 48"		28.34	56.69
3	1	X-232697	TRPD-HD DIAGONAL ANGLE - SITE PRO 1	52 1/2 in	14.35	14.35
4	2	X-232698	TRPD-HD SUPPORT PLATE - SITE PRO 1	29 1/2 in	8.72	17.44
5	4	X-CSRT-PCB	PIPE CONNECTION BRACKET	12 in	3.01	12.03
6	6	X-115765	5" V-CLAMP	7 1/16 in	1.03	6.15
7	2	X-UPC1	SMALL PIPE TO PIPE BRACKET	6 3/4 in	0.86	1.71
8	4	G12R-6	1/2" x 6" GALV. THREADED ROD		0.33	1.34
9	4	G12055	1/2" x 5.5" HDG HEX BOLT GR5 FULL THREAD	5 1/2 in	0.35	1.41
10	6	G12045	1/2" x 4.5" HDG HEX BOLT GR5 FULL THREAD	4 1/2 in	0.30	1.79
11	2	G1203	1/2" x 3" HDG HEX BOLT GR5 FULL THREAD	3 in	0.22	0.43
12	21	G12FW	1/2" HDG USS FLATWASHER	3/32 in	0.03	0.72
13	24	G12LW	1/2" HDG LOCKWASHER	1/8 in	0.01	0.33
14	30	G12NUT	1/2" HDG HEAVY 2H HEX NUT		0.07	2.15
					<b>TOTAL WT. #</b>	<b>189.71</b>



**TOLERANCE NOTES**

TOLERANCES ON DIMENSIONS, UNLESS OTHERWISE NOTED ARE:  
 SAWED, SHEARED AND GAS CUT EDGES ( $\pm 0.030"$ )  
 DRILLED AND GAS CUT HOLES ( $\pm 0.030"$ ) - NO CONING OF HOLES  
 LASER CUT EDGES AND HOLES ( $\pm 0.010"$ ) - NO CONING OF HOLES  
 BENDS AND ANGLES ARE  $\pm 1/2$  DEGREE  
 ALL OTHER MACHINING ( $\pm 0.030"$ )  
 ALL OTHER ASSEMBLY ( $\pm 0.060"$ )

PROPRIETARY NOTE:  
 THE DATA AND TECHNIQUES CONTAINED IN THIS DRAWING ARE PROPRIETARY INFORMATION OF VALMONT INDUSTRIES AND CONSIDERED A TRADE SECRET. ANY USE OR DISCLOSURE WITHOUT THE CONSENT OF VALMONT INDUSTRIES IS STRICTLY PROHIBITED.

DESCRIPTION  
**CONSTRUCTOR SET SMALL BALLAST ROOFTOP FRAME SINGLE MAST PIPE**

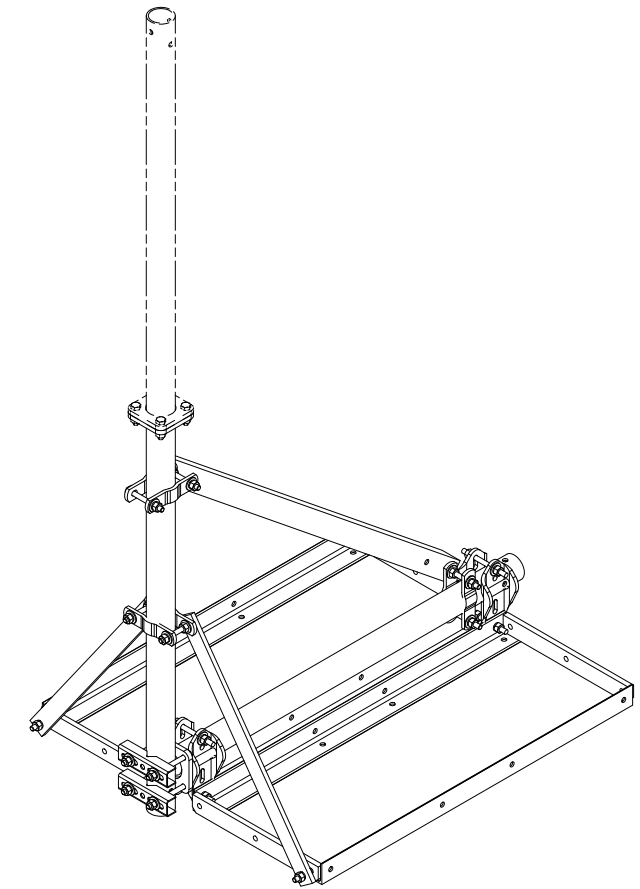
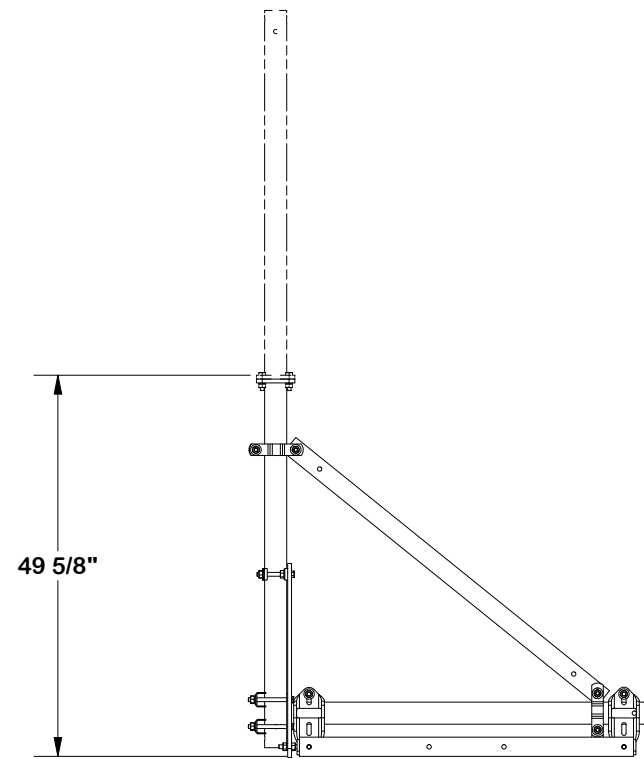
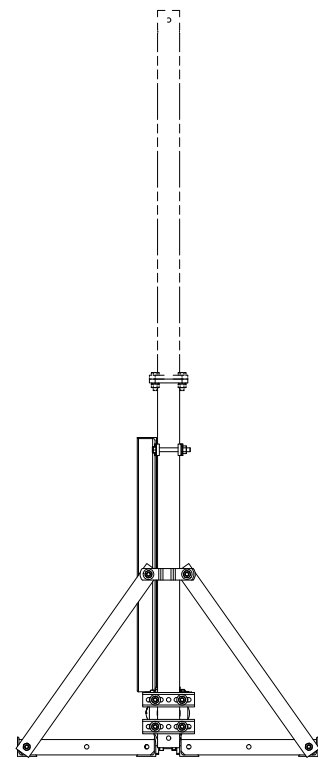
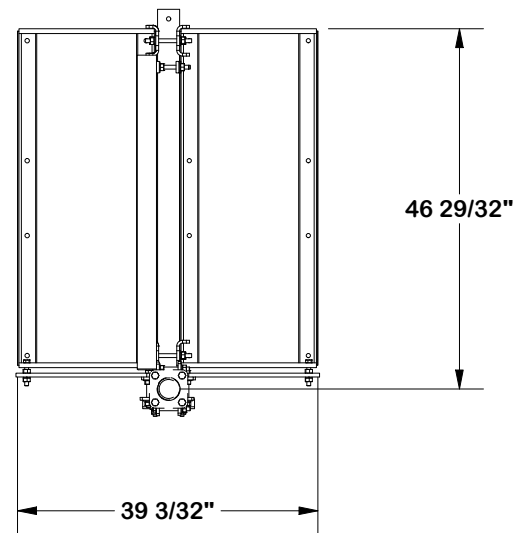
CPD NO.	DRAWN BY <b>CEK</b>	6/6/2023	ENG. APPROVAL <b>6/13/2023</b>
CLASS <b>01</b>	SUB <b>01</b>	DRAWING USAGE <b>CUSTOMER</b>	CHECKED BY <b>JET</b>
			6/13/2023



A valmont COMPANY

Engineering Support Team:  
**1-888-753-7446**

PART NO. <b>CSRT-1D-SB</b>	<b>1 OF 2</b> PAGE
DWG. NO. <b>CSRT-1D-SB</b>	



**TOLERANCE NOTES**

TOLERANCES ON DIMENSIONS, UNLESS OTHERWISE NOTED ARE:  
 SAWED, SHEARED AND GAS CUT EDGES ( $\pm 0.030$ " )  
 DRILLED AND GAS CUT HOLES ( $\pm 0.030$ " ) - NO CONING OF HOLES  
 LASER CUT EDGES AND HOLES ( $\pm 0.010$ " ) - NO CONING OF HOLES  
 BENDS AND ANGLES ARE  $\pm 1/2$  DEGREE  
 ALL OTHER MACHINING ( $\pm 0.030$ " )  
 ALL OTHER ASSEMBLY ( $\pm 0.060$ " )

PROPRIETARY NOTE:  
 THE DATA AND TECHNIQUES CONTAINED IN THIS DRAWING ARE PROPRIETARY INFORMATION OF VALMONT INDUSTRIES AND CONSIDERED A TRADE SECRET. ANY USE OR DISCLOSURE WITHOUT THE CONSENT OF VALMONT INDUSTRIES IS STRICTLY PROHIBITED.

DESCRIPTION  
**CONSTRUCTOR SET SMALL BALLAST  
 ROOFTOP FRAME SINGLE MAST PIPE**

CPD NO.	DRAWN BY <b>CEK</b>	6/6/2023	ENG. APPROVAL <b>6/13/2023</b>
CLASS <b>01</b>	SUB <b>01</b>	DRAWING USAGE <b>CUSTOMER</b>	CHECKED BY <b>JET</b>
			<b>6/13/2023</b>

**SITE PRO 1**  
 A valmont COMPANY

Engineering Support Team:  
**1-888-753-7446**

PART NO.	<b>CSRT-1D-SB</b>
DWG. NO.	<b>CSRT-1D-SB</b>